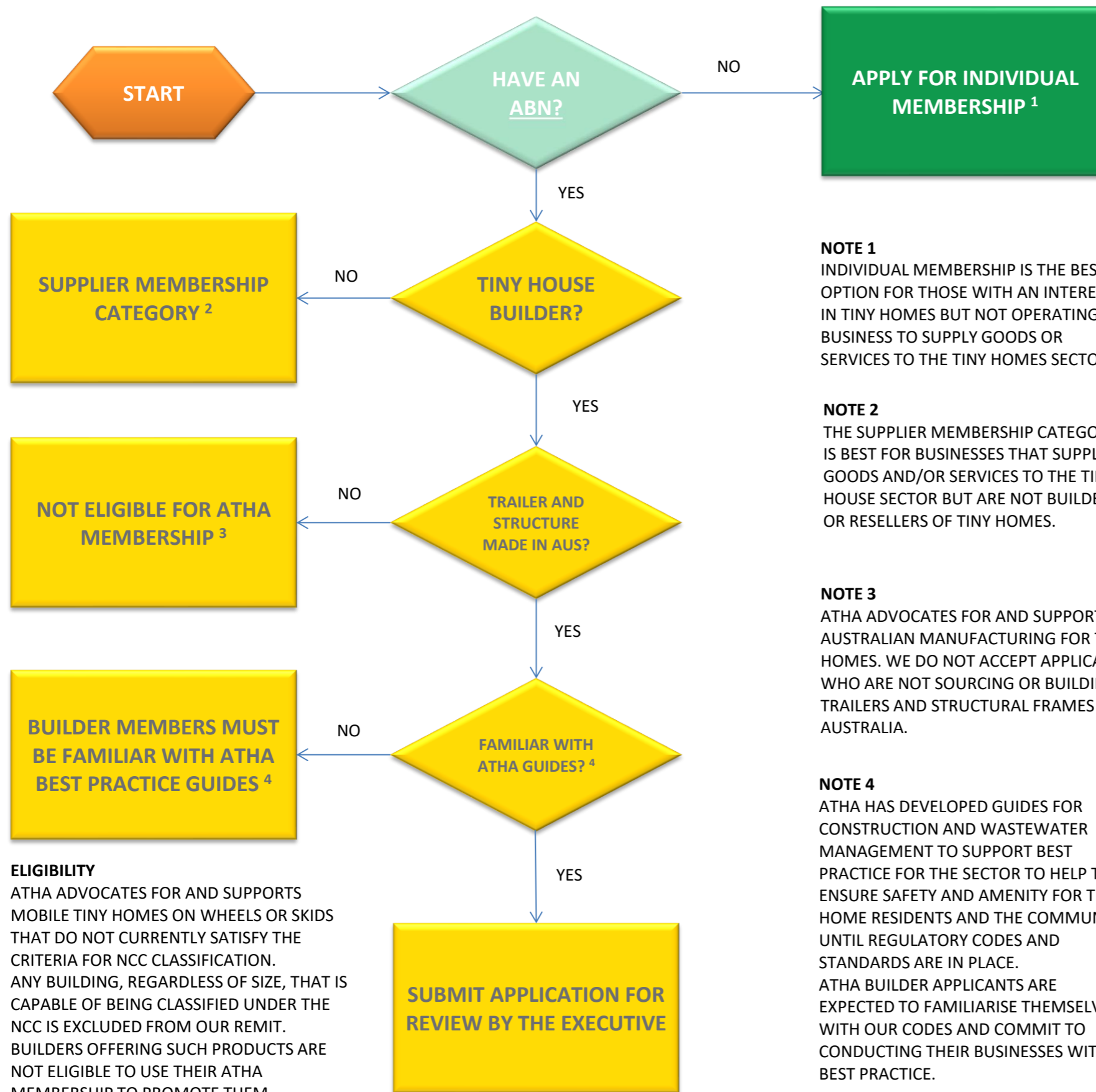


ATHA MEMBERSHIP FLOW CHART



ELIGIBILITY
 ATHA ADVOCATES FOR AND SUPPORTS MOBILE TINY HOMES ON WHEELS OR SKIDS THAT DO NOT CURRENTLY SATISFY THE CRITERIA FOR NCC CLASSIFICATION. ANY BUILDING, REGARDLESS OF SIZE, THAT IS CAPABLE OF BEING CLASSIFIED UNDER THE NCC IS EXCLUDED FROM OUR REMIT. BUILDERS OFFERING SUCH PRODUCTS ARE NOT ELIGIBLE TO USE THEIR ATHA MEMBERSHIP TO PROMOTE THEM.

NOTE 1
 INDIVIDUAL MEMBERSHIP IS THE BEST OPTION FOR THOSE WITH AN INTEREST IN TINY HOMES BUT NOT OPERATING A BUSINESS TO SUPPLY GOODS OR SERVICES TO THE TINY HOMES SECTOR.

NOTE 2
 THE SUPPLIER MEMBERSHIP CATEGORY IS BEST FOR BUSINESSES THAT SUPPLY GOODS AND/OR SERVICES TO THE TINY HOUSE SECTOR BUT ARE NOT BUILDERS OR RESELLERS OF TINY HOMES.

NOTE 3
 ATHA ADVOCATES FOR AND SUPPORTS AUSTRALIAN MANUFACTURING FOR TINY HOMES. WE DO NOT ACCEPT APPLICANTS WHO ARE NOT SOURCING OR BUILDING TRAILERS AND STRUCTURAL FRAMES IN AUSTRALIA.

NOTE 4
 ATHA HAS DEVELOPED GUIDES FOR CONSTRUCTION AND WASTEWATER MANAGEMENT TO SUPPORT BEST PRACTICE FOR THE SECTOR TO HELP TO ENSURE SAFETY AND AMENITY FOR TINY HOME RESIDENTS AND THE COMMUNITY UNTIL REGULATORY CODES AND STANDARDS ARE IN PLACE. ATHA BUILDER APPLICANTS ARE EXPECTED TO FAMILIARISE THEMSELVES WITH OUR CODES AND COMMIT TO CONDUCTING THEIR BUSINESSES WITH BEST PRACTICE.